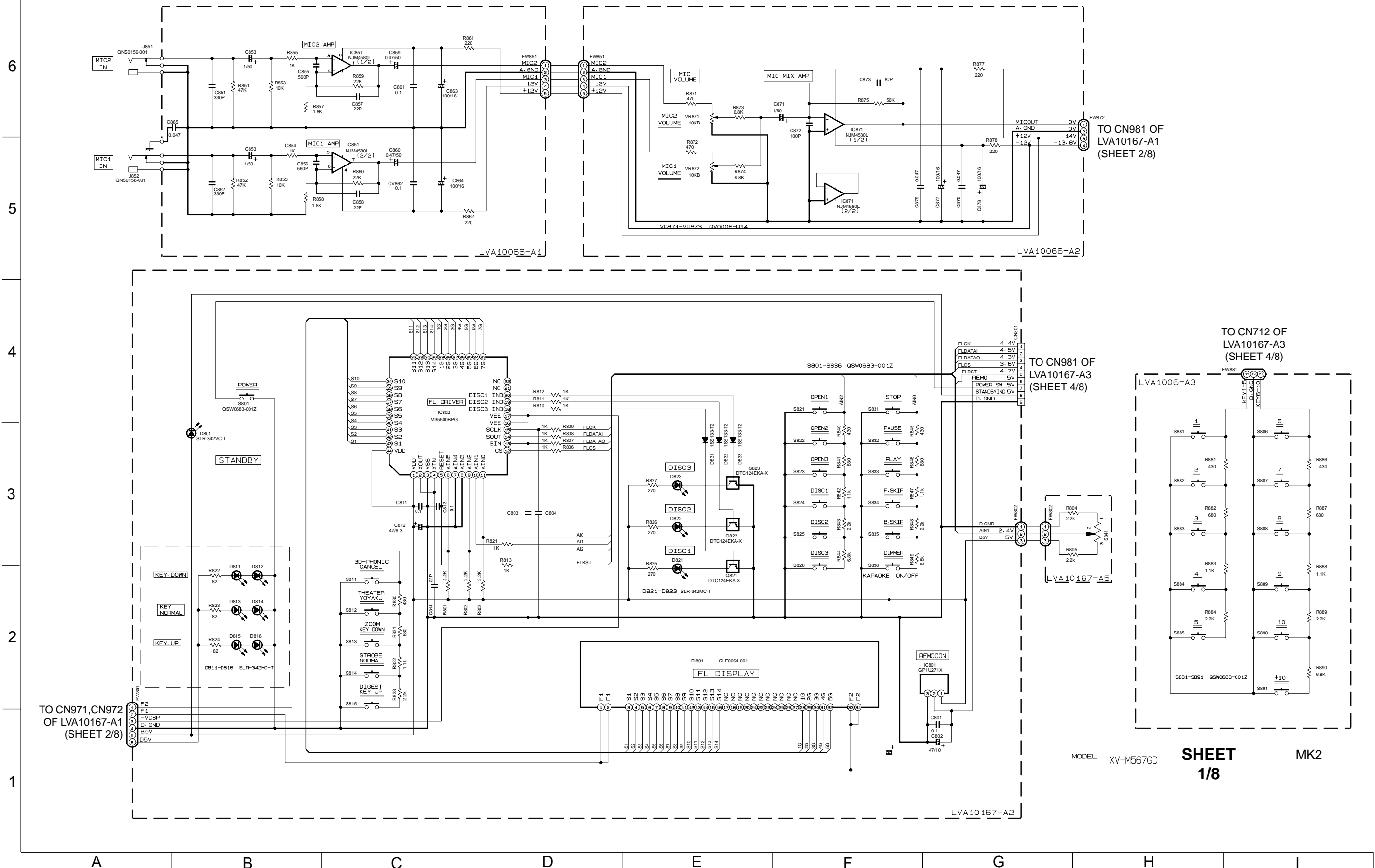


Standard schematic diagrams

FL Display & operation switch section

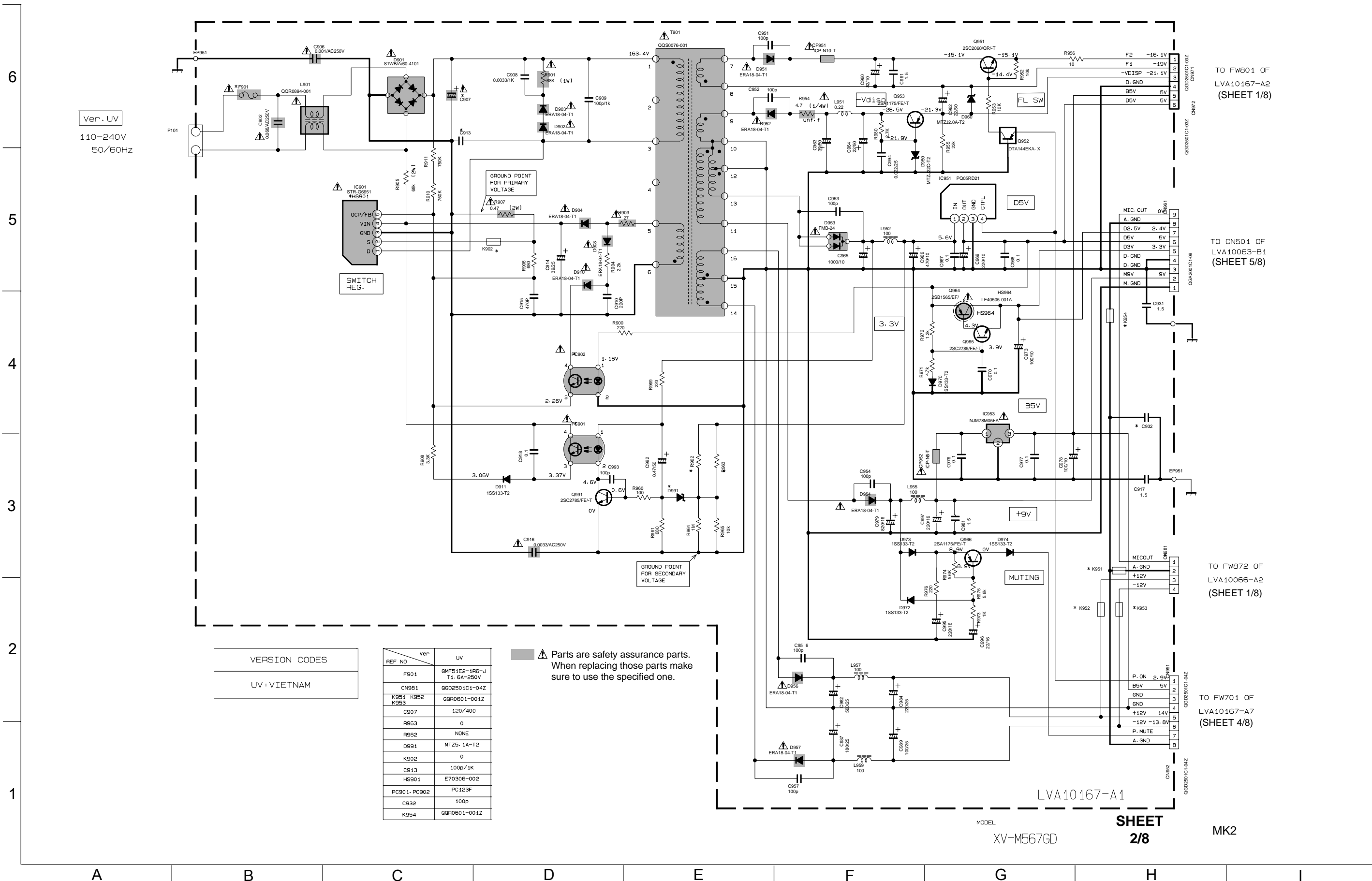


MODEL XV-M567GD

SHEET 1/8

MK2

Power supply section



Ver. UV
110-240V
50/60Hz

VERSION CODES
UV : VIETNAM

REF NO	Ver	UV
F901	0MF51E2-1R6-J	T1.6A-250V
CN9B1	0GD2501C1-04Z	
K951 K952 K953	0QR0601-001Z	
C907	120/400	
R963	0	
R962	NONE	
D991	MTZ5. 1A-T2	
K902	0	
C913	100p/1K	
HS901	E70306-002	
PC901-PC902	PC123F	
C932	100p	
K954	0QR0601-001Z	

Parts are safety assurance parts.
When replacing those parts make
sure to use the specified one.

TO FWB01 OF
LVA10167-A2
(SHEET 1/8)

TO CN501 OF
LVA10063-B1
(SHEET 5/8)

TO FWB72 OF
LVA10066-A2
(SHEET 1/8)

TO FW701 OF
LVA10167-A7
(SHEET 4/8)

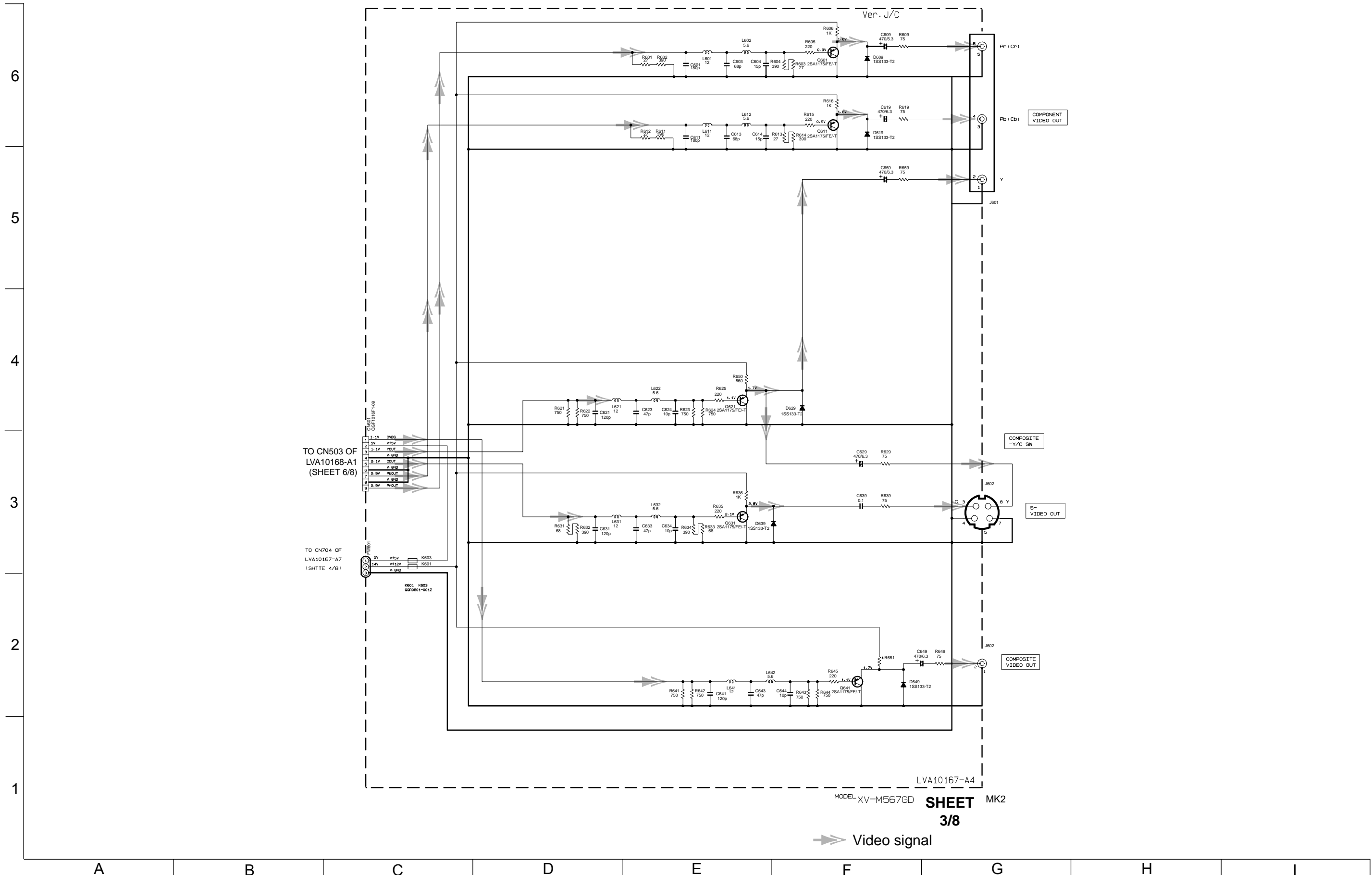
LVA10167-A1

MODEL
XV-M567GD

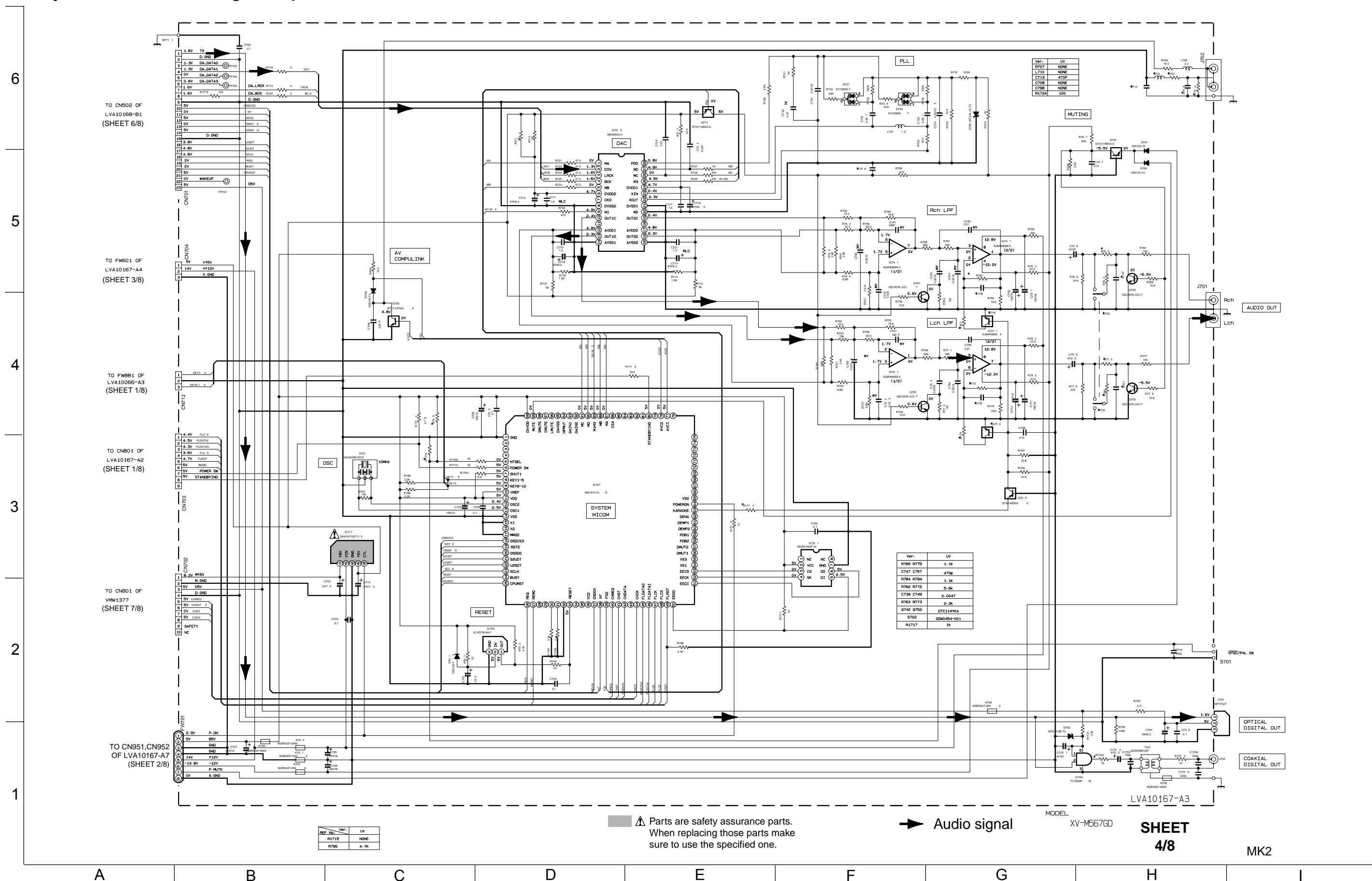
SHEET
2/8

MK2

Video signal output section



System control & audio signal output section



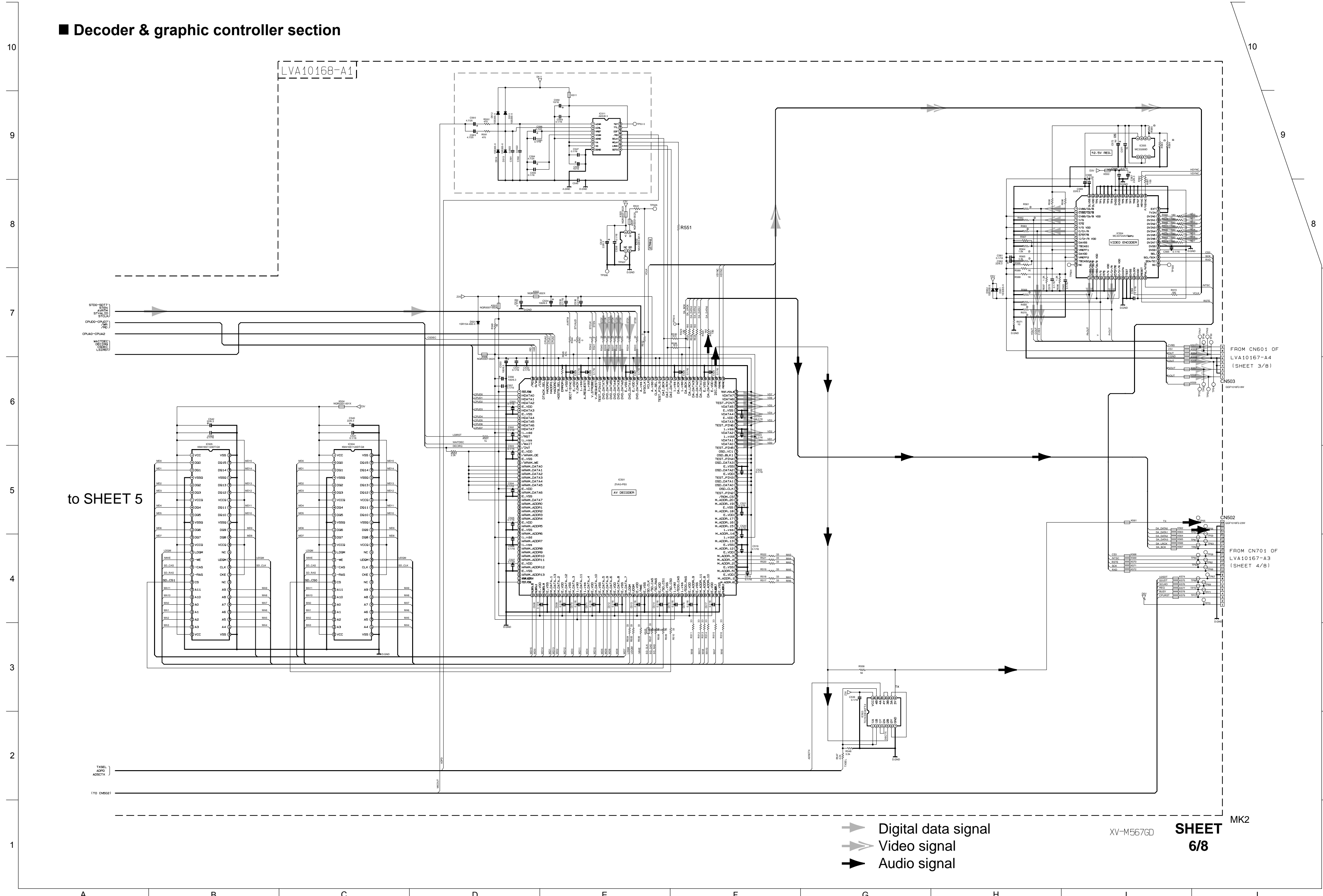
Parts are safety assurance parts. When replacing those parts make sure to use the specified one.

Audio signal

MODEL XV-M567GD SHEET 4/8

MK2

Decoder & graphic controller section



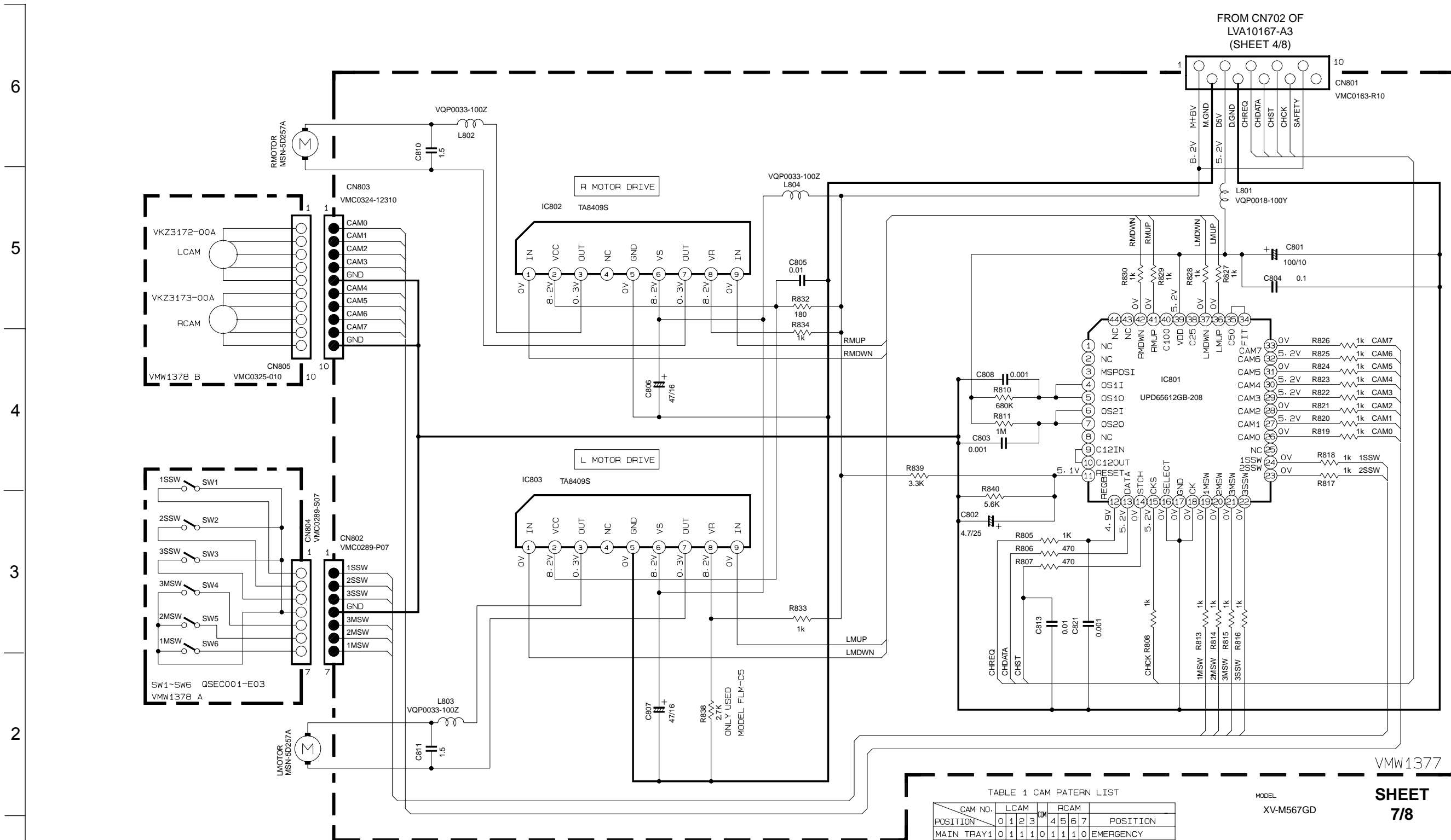
to SHEET 5

- ➡ Digital data signal
- ➡ Video signal
- ➡ Audio signal

XV-M567GD SHEET 6/8

MK2

■ Mechanism control section



NOTES

1. VOLTAGES ARE DC-MEASURED WITH A DIGITAL VOLT METER OR OSCILLOSCOPE WITHOUT INPUT SIGNAL. CONDITION --- DISC 1 CD STOP MODE
2. UNLESS OTHERWISE SPECIFIED, RESISTORS ARE 1/6W ±5% CARBON RESISTOR. ALL RESISTANCE VALUES ARE IN Ω(M). ALL CAPACITORS ARE CERAMIC CAPACITOR OR MYLAR CAPACITOR. ALL CAPACITANCE VALUES ARE IN μF(P=PF). ALL INDUCTANCE VALUES ARE IN μH(M=MH). ALL E. CAPACITORS ARE SHOWN IN THE FORM OF CAPACITANCE (μF)/RATED VOLTAGE (V).

- Ⓛ UNFLAMMABLE CARBON RESISTOR
- Ⓜ METAL FILM RESISTOR
- Ⓞ OXIDE METAL FILM RESISTOR
- Ⓟ ±20% LOW LEAK CURRENT ELECTROLYTIC CAPACITOR
- Ⓠ NON-POLARISED ELECTROLYTIC CAPACITOR
- Ⓡ POLYPROPYLENE CAPACITOR
- Ⓢ POLYSTYROL CAPACITOR

TABLE 1 CAM PATTERN LIST

CAM NO.	LCAM	RCAM	POSITION
MAIN TRAY1	0 1 1 1 0	1 1 1 0	EMERGENCY
SUB TRAY1	0 0 1 1 0	1 1 0 0	TRAY1 STAND-BY
CAMR 1	0 1 0 1 0	1 0 1 0	TRAY1 CHACKING
MAIN TRAY2	1 0 0 1 0	1 0 0 1	TRAY2 STAND-BY
SUB TRAY2	1 1 1 0 0	0 1 1 1	TRAY2 CHACKING
CAMR 2	1 0 1 0 0	0 1 0 1	TRAY3 STAND-BY
MAIN TRAY3	1 1 0 0 0	0 0 1 1	TRAY3 CHACKING
SUB TRAY3	1 0 0 0 0		
OFF	1 1 1 1 0	1 1 1 1	OFF

0=0V
1=5V

MODEL XV-M567GD
SHEET 7/8 MK2

Voltage value section

IC101 table with columns NO, DC(V), NO, DC(V), NO, DC(V). Rows 1-50.

IC102 table with columns NO, DC(V). Rows 1-5.

IC201 table with columns NO, DC(V), NO, DC(V), NO, DC(V). Rows 1-50.

IC271 table with columns NO, DC(V). Rows 1-18.

IC301 table with columns NO, DC(V), NO, DC(V), NO, DC(V). Rows 1-50.

IC311 table with columns NO, DC(V). Rows 1-5.

IC371 table with columns NO, DC(V). Rows 1-5.

IC312 table with columns NO, DC(V). Rows 1-5.

IC372 table with columns NO, DC(V). Rows 1-5.

IC321 table with columns NO, DC(V). Rows 1-8.

IC374 table with columns NO, DC(V). Rows 1-8.

IC322 table with columns NO, DC(V). Rows 1-14.

IC401 table with columns NO, DC(V), NO, DC(V). Rows 1-50.

IC402 table with columns NO, DC(V). Rows 1-44.

IC403 table with columns NO, DC(V). Rows 1-8.

IC452 table with columns NO, DC(V). Rows 1-8.

IC501 table with columns NO, DC(V), NO, DC(V), NO, DC(V). Rows 1-52.

IC502 table with columns NO, DC(V). Rows 1-4.

IC503 table with columns NO, DC(V). Rows 1-14.

IC504 table with columns NO, DC(V). Rows 1-50.

IC505 table with columns NO, DC(V). Rows 1-50.

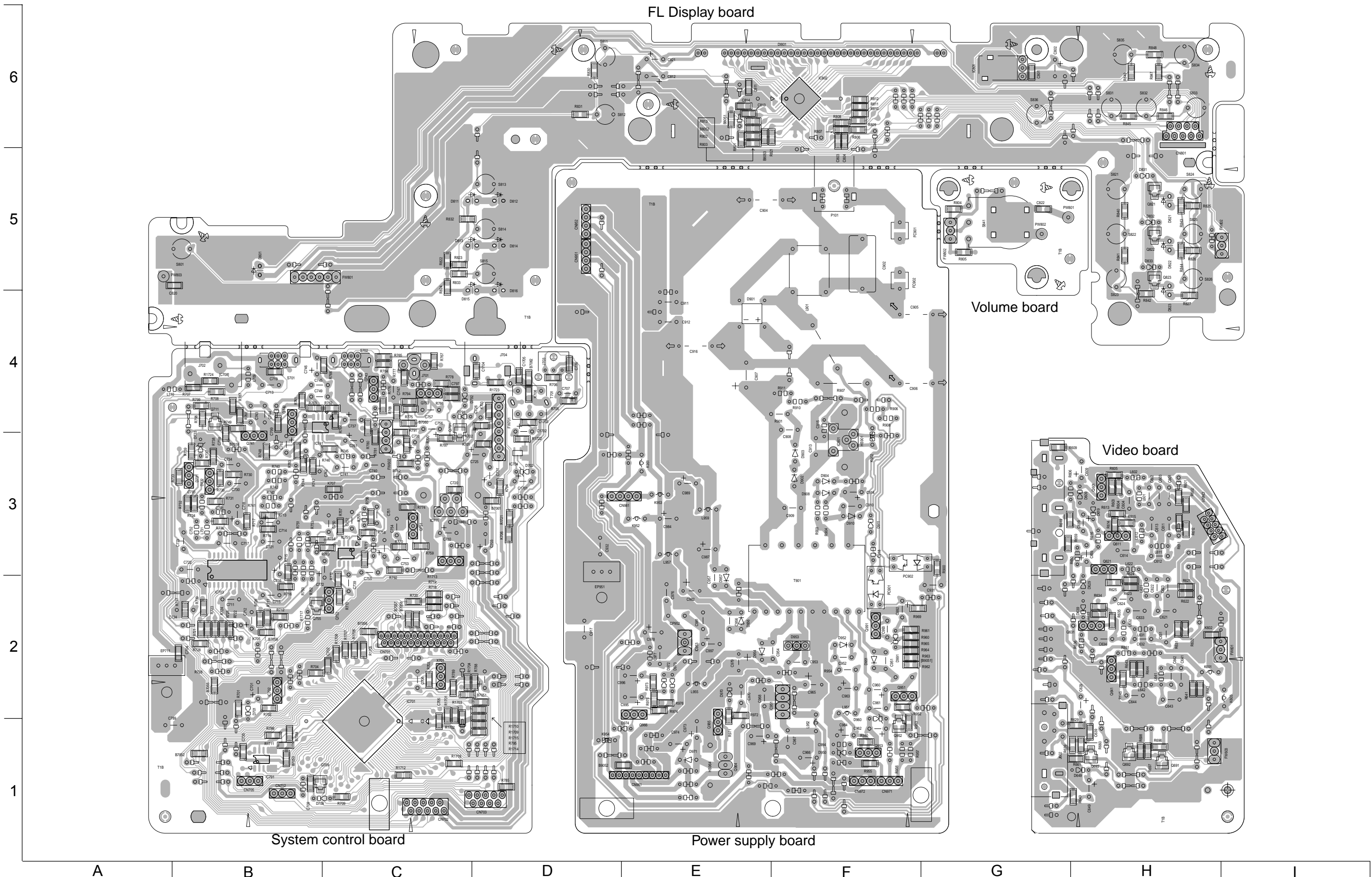
IC554 table with columns NO, DC(V), NO, DC(V). Rows 1-50.

MODEL XV-M567GD

SHEET 8/8

Printed circuit boards

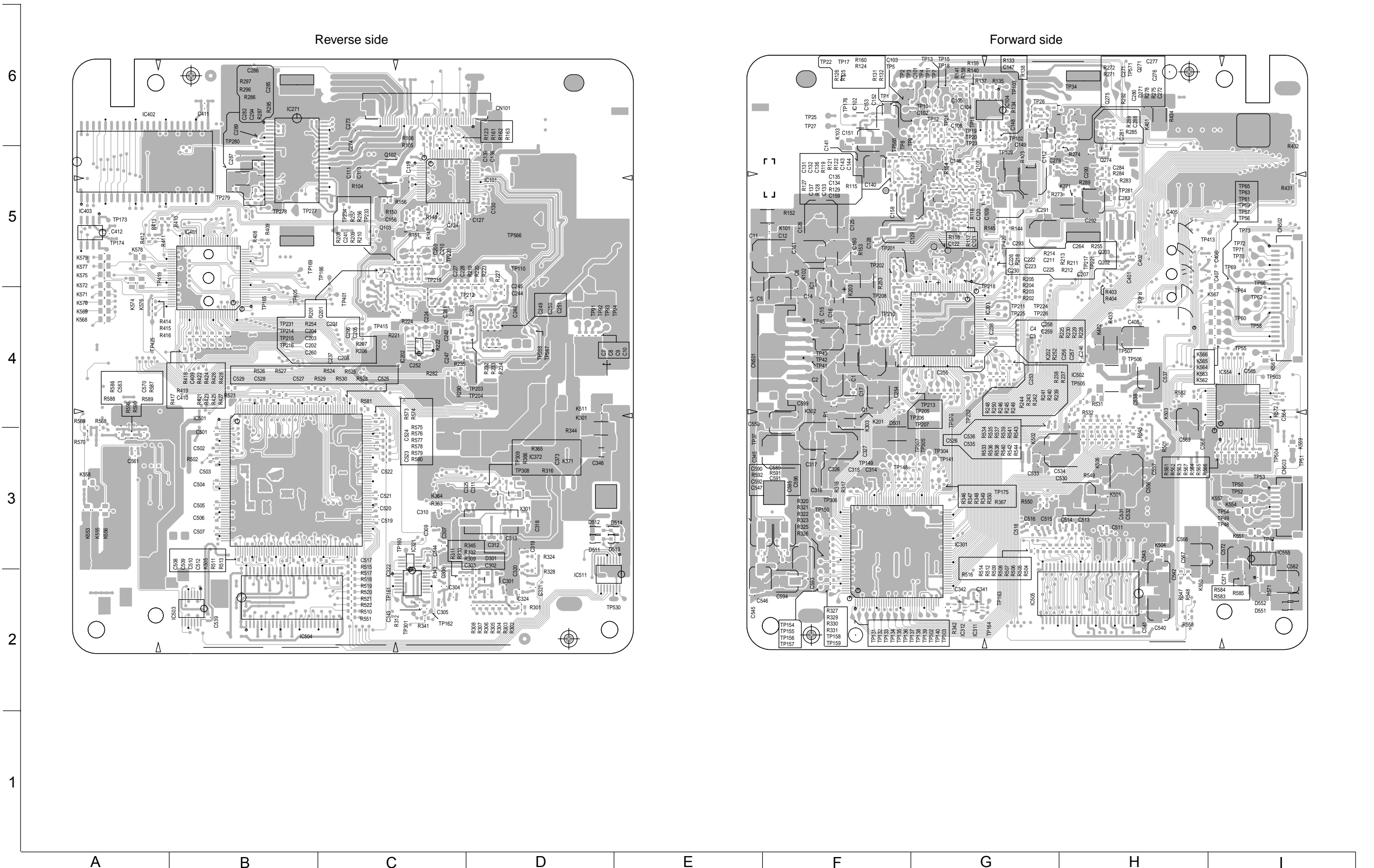
■ Front & power supply board



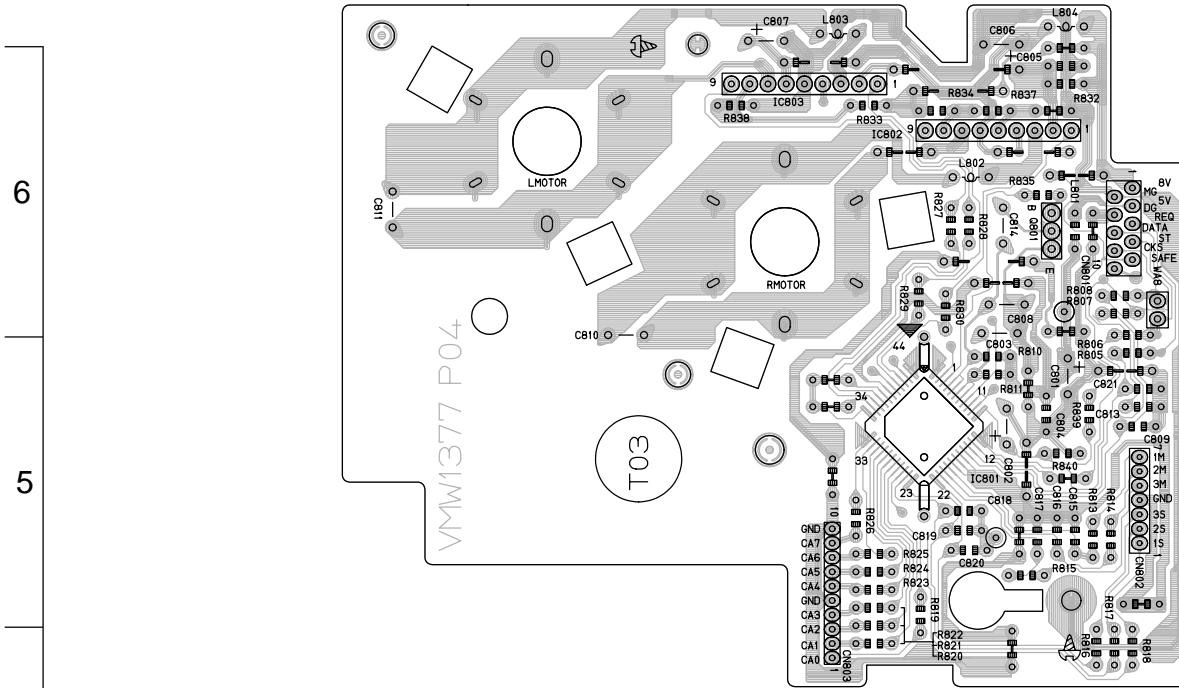
■ Traverse mechanism control board

Reverse side

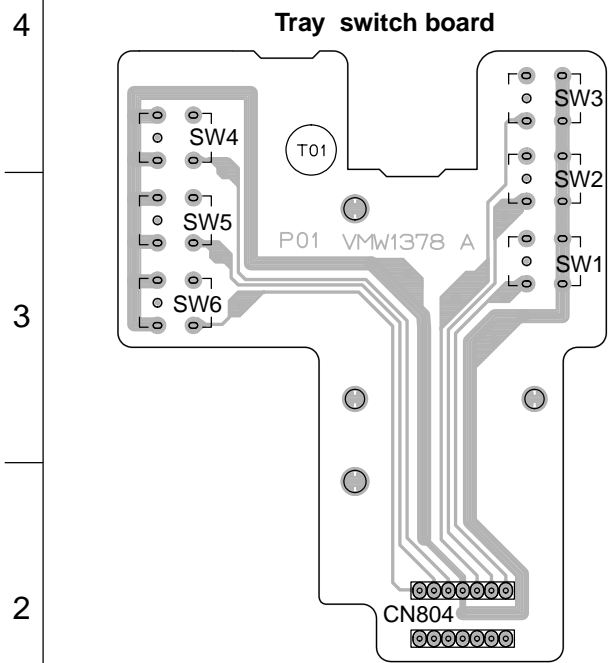
Forward side



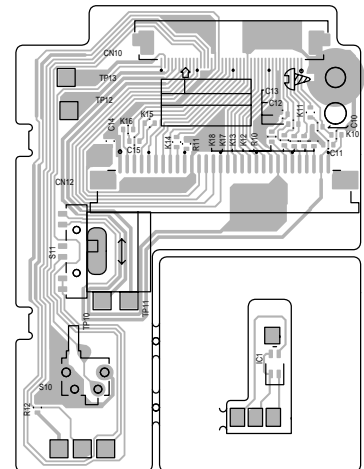
■ Mechanism control board



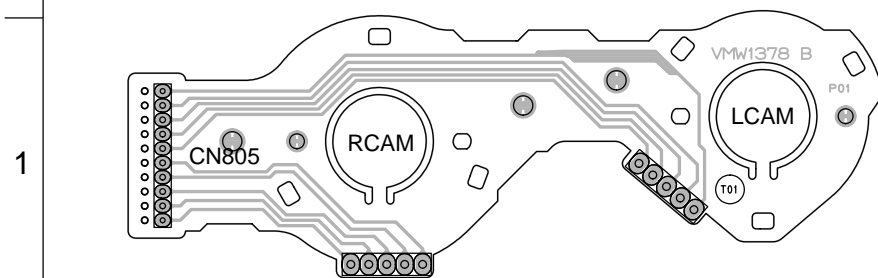
■ Changer mechanism switch board



■ Relay board



Cam switch board



A B C D E

■ KARAOKE Board

